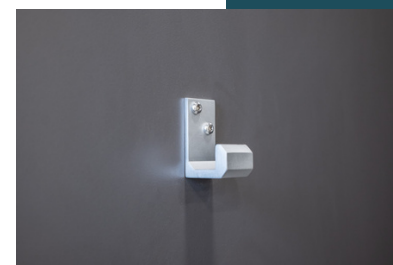
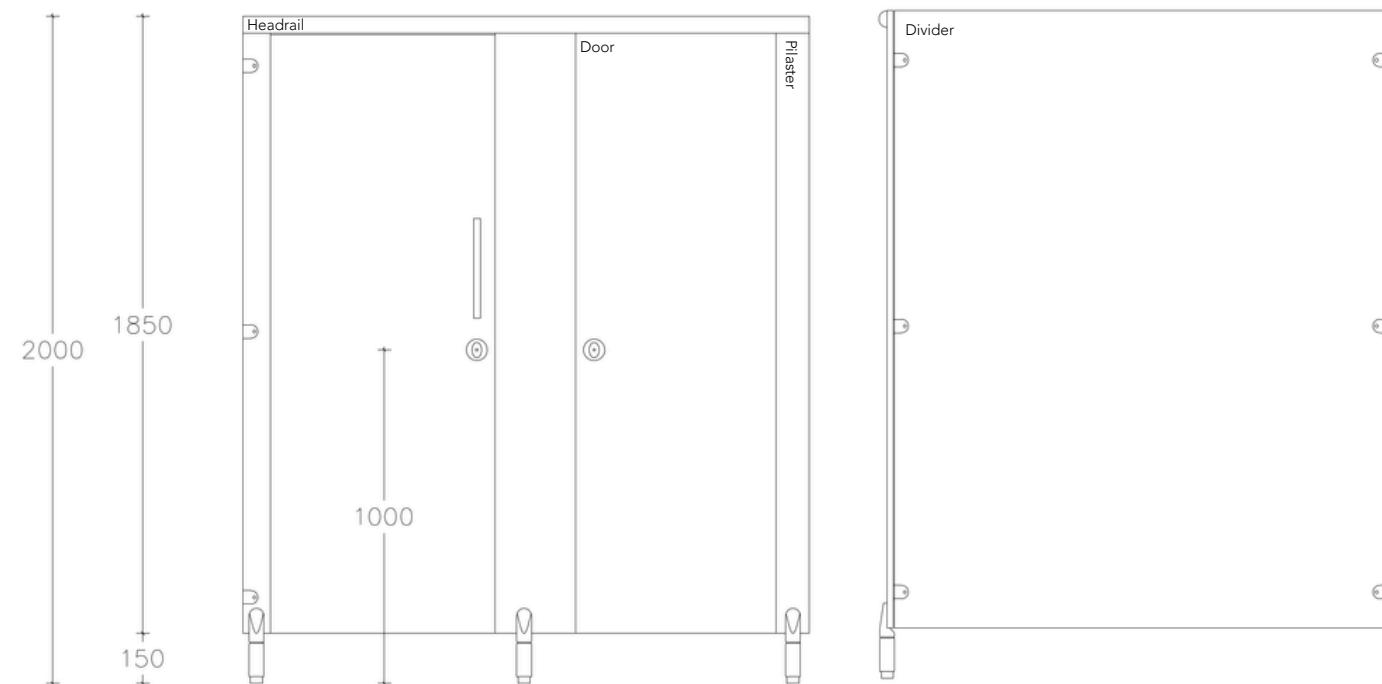
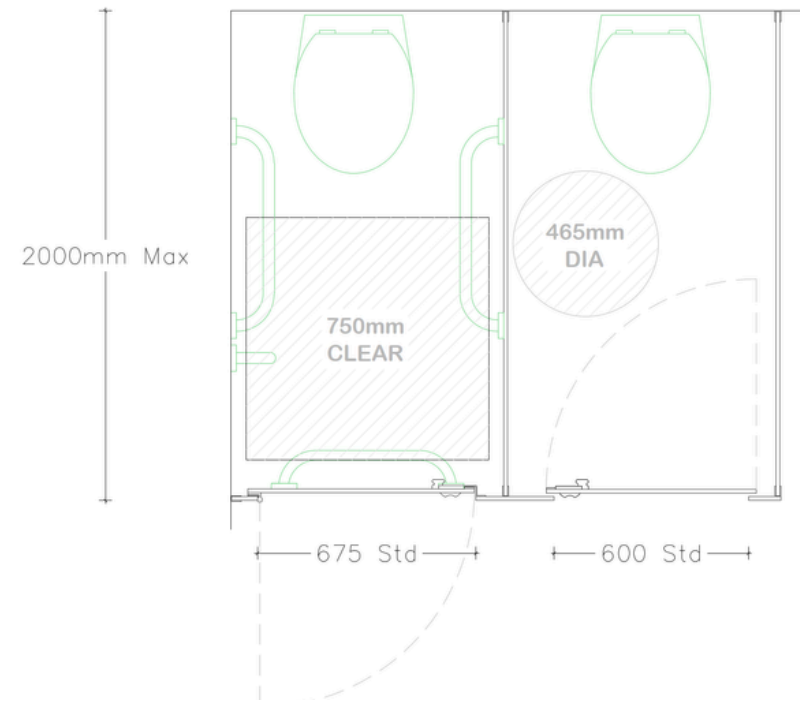


# Base MFC

Designed for lighter-use washrooms in commercial and industrial spaces.



## DIMENSIONS

- Max Overall Height
  - 2000mm
- Max Depth
  - 2000mm
- Floor Clearance
  - 150mm

## TECHNICAL DETAILS

### Door Panel

- Material
  - Melamine Faced Chipboard
- Edge Treatment
  - 2mm thick bounded ABS lipping
- Thickness
  - 18mm
- Standard Dimensions
  - Inward Opening H 1850mm x W 650mm, 25mm overlap with pilaster either side.
  - Outward Opening H 1850mm x W 700mm, 25mm overlap with pilaster either side
  - Size to suit site requirements and relevant building regulations
- Components
  - Indicator Face Plate
  - Indicator Slide Bolt
  - Coat Hook
  - Self Closing Hinges

### Pilaster Panel

- Material
  - Melamine Faced Chipboard
- Edge Treatment
  - 2mm thick bounded ABS lipping
- Thickness
  - 18mm
- Standard Dimensions
  - H 1850mm x W - varies to suit site dimensions
- Components
  - Pedestal
  - Indicator Slide Bolt Keep
  - Headrail
  - Fixing Cleat

## TECHNICAL DETAILS

### Divisions

- Material
  - Melamine Faced Chipboard
- Edge Treatment
  - 2mm thick bounded ABS lipping
- Thickness
  - 18mm
- Standard Dimensions
  - H 1850mm x W 1500mm - varies to suit site dimensions. Dimensions from back of cubicle to front
- Components
  - Fixing Cleat

### Hardware

- Indicator Plate
  - Satin Anodised Aluminium
  - Emergency release facility
  - Circular face plate
  - Concealed fixings
  - Red/White occupancy indicator
  - Face Fixed
- Indicator Bolt
  - Satin Anodised Aluminium
  - Easy slide action lock
  - Integrated buffer
  - Face Fixed
- Keep
  - Satin Anodised Aluminium
  - Face Fixed
- Hinge
  - Satin Anodised Aluminium
  - Self closing cams
  - Breakout-resistant fixing sleeve
  - Anti-finger trap
  - Lift-off facility for emergency access
- Cleat
  - Satin Anodised Aluminium
  - D brackets
  - Stainless Steel bolt-through fixings
- Pedestal
  - Satin Anodised Aluminium
  - Adjustable height to accommodate uneven floors
  - Giving 150mm floor clearance
  - Solid rolled design
- Headrail
  - Satin Anodised Aluminium
  - High strength D profile