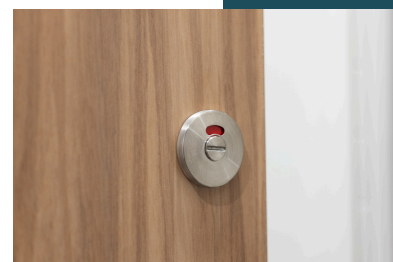
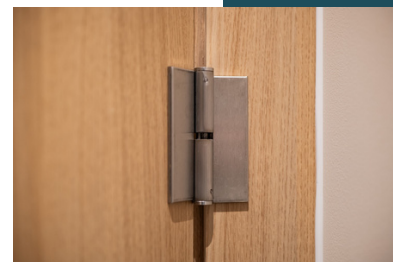
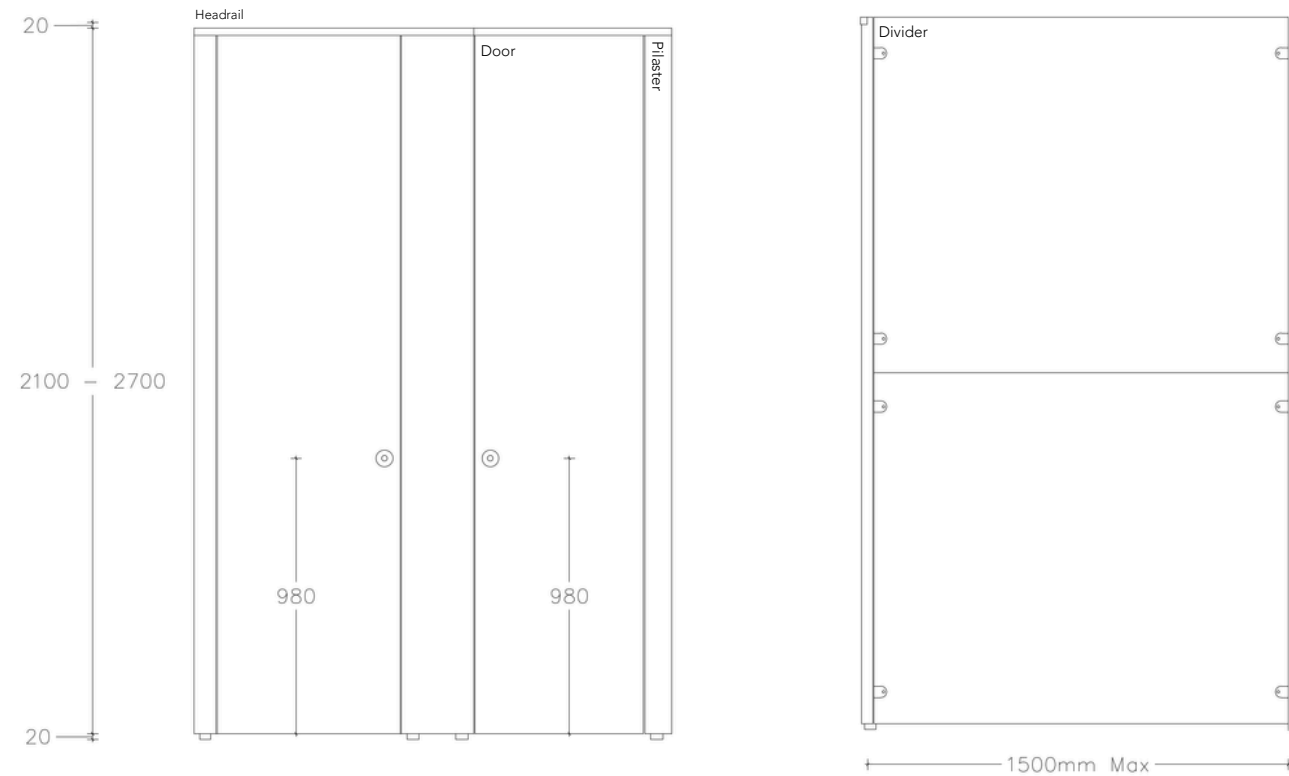
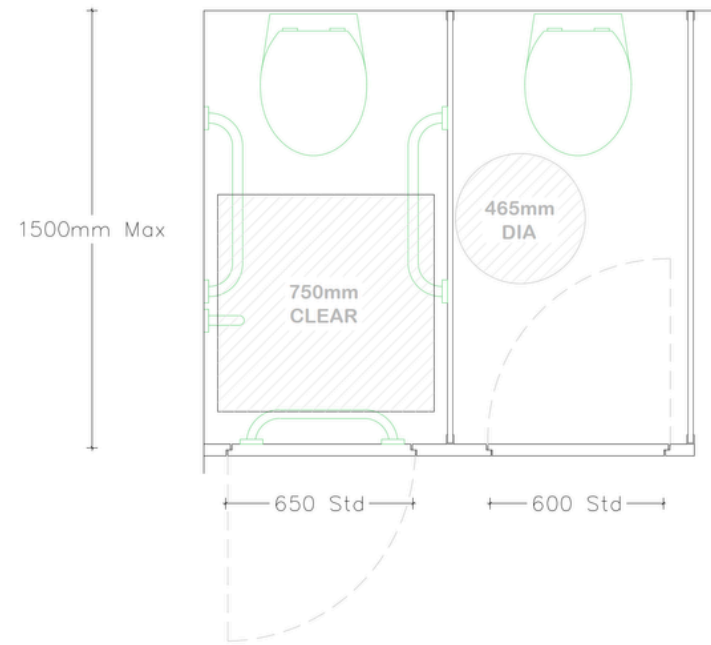


# Duke HPL

Perfect for high-end corporate, retail and entertainment sectors



## DIMENSIONS

- Max Overall Height - 2700mm
- Max Depth - 1500mm
- Floor Clearance - 20mm
- Ceiling Clearance - 20mm

## TECHNICAL DETAILS

### Door Panel

- Material - High Pressure Laminate
- Panel Detail - Rebated edges to form flush finish with pilasters when shut
- Edge Treatment - 2mm thick bounded ABS lipping
- Thickness - 40mm
- Standard Dimensions
  - Inward Opening H 1850mm x W 650mm, 25mm overlap with pilaster either side.
  - Outward Opening H 1850mm x W 700mm, 25mm overlap with pilaster either side
  - Size to suit site requirements and relevant building regulations
- Components
  - Indicator Face Plate
  - Indicator Turn Bolt
  - Coat Hook
  - Self Closing Hinges

### Pilaster Panel

- Material - High Pressure Laminate
- Panel Detail - Rebated edges to form flush finish with pilasters when shut
- Edge Treatment - 2mm thick bounded ABS lipping
- Thickness - 40mm
- Standard Dimensions
  - H 2680mm x W - varies to suit site dimensions
- Components
  - Pedestal
  - Indicator Turn Bolt Keep
  - Headrail
  - Fixing Cleat

## TECHNICAL DETAILS

### Divisions

- Material - High Pressure Laminate
- Edge Treatment - 2mm thick bounded ABS lipping
- Thickness - 18mm
- Standard Dimensions
  - H 2680mm x W 1500mm - varies to suit site dimensions. Dimensions from back of cubicle to front
- Components
  - Fixing Cleat

### Hardware

- Indicator Plate
  - Stainless Steel
  - Emergency release facility
  - Circular face plate
  - Concealed fixings
  - Red/White occupancy indicator
  - Face Fixed
- Indicator Bolt
  - Stainless Steel
  - Turn operated
  - Face Fixed
- Keep
  - Stainless Steel
  - Face Fixed
- Hinge
  - Stainless Steel
  - Sprung butt hinge for self-closing doors
  - Face Fixed
- Cleat
  - Stainless Steel
  - D brackets
  - Bolt-in-fixings
- Pedestal
  - Stainless Steel
  - 20mm
  - Circular Design
- Headrail
  - Stainless Steel
  - High strength box section

Call: 01692 774920 | Email: info@cube-install.com

Cube Install Limited

Belmore Place, 6 Bunkell Road, Rackheath Ind Estate, Norwich, NR13 6PX

www.cube-install.com

Registered in England No. 10501718

