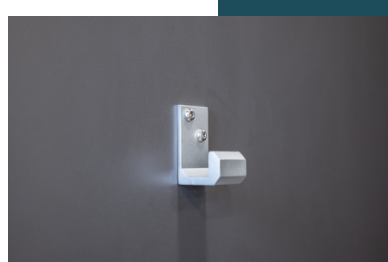
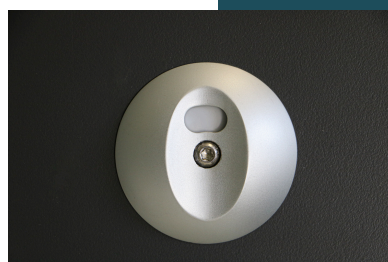
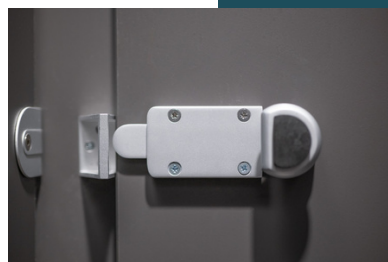
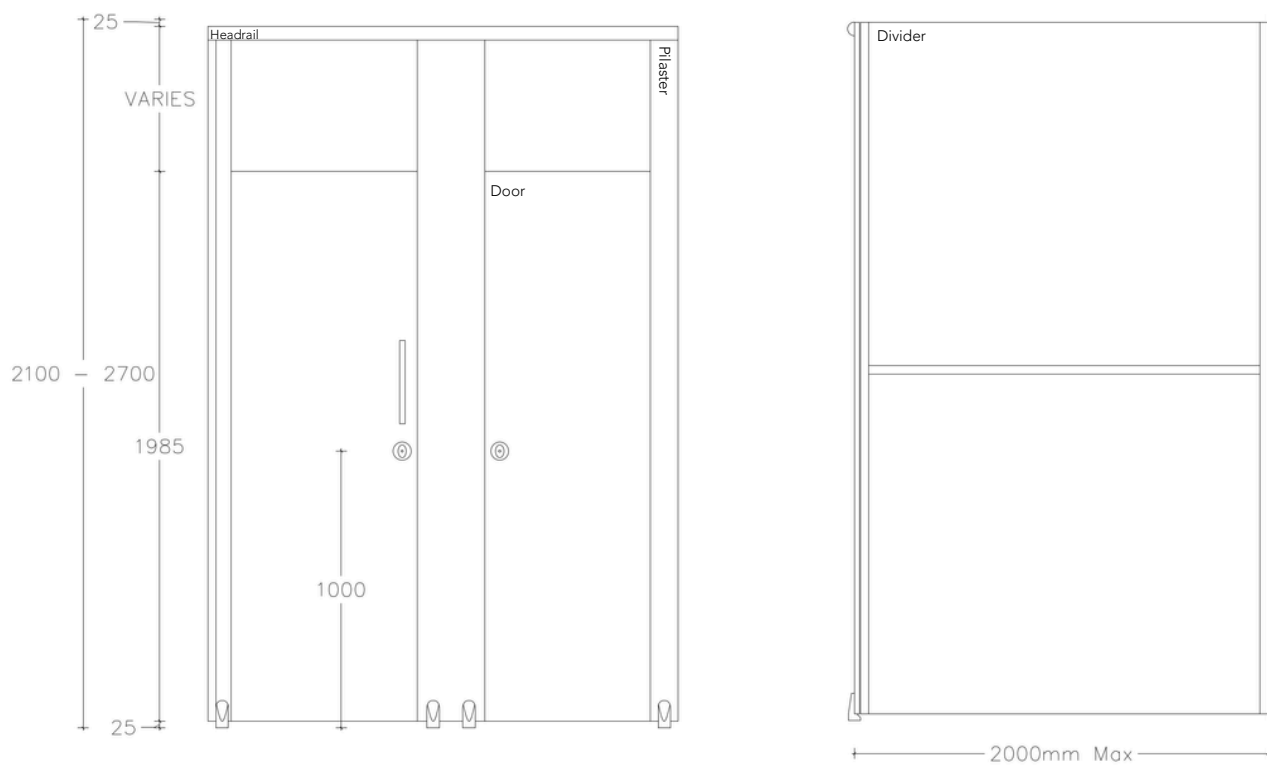
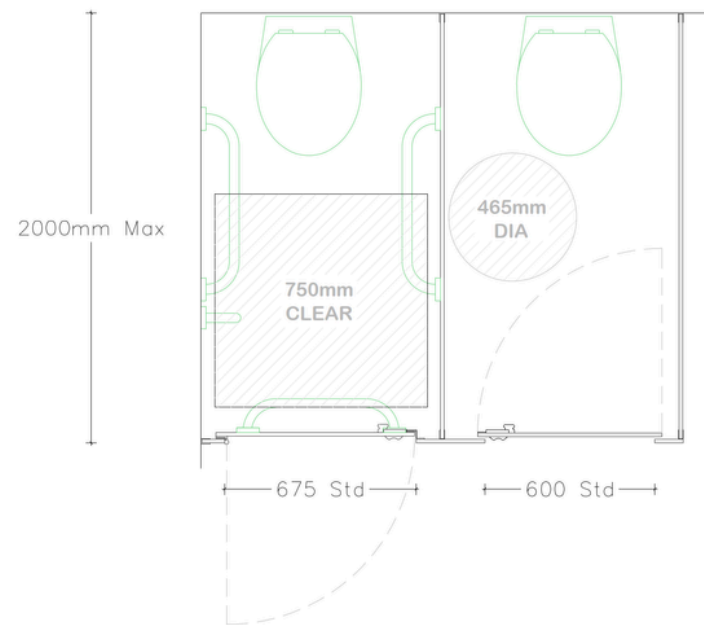


Rise SGL

Suitable for unisex washrooms with minimal floor clearance.



DIMENSIONS

- Max Overall Height - 2700mm
- Max Depth - 2000mm
- Floor Clearance - 25mm
- Ceiling Clearance - 25mm

TECHNICAL DETAILS

Door Panel

- Material - Solid Grade Laminate
- Edge Treatment - Polished and radiused
- Thickness - 13mm

Standard Dimensions

- Inward Opening Full height: H up to 2680mm x W 750mm, 25mm overlap with either side

Door with over panel: H

- 750mm x W 650mm, 25mm overlap with pilaster either side

Door with over panel: H

- 1975mm x W 700mm, 25mm overlap with pilaster either side

Door with over panel: H

- 1975mm x W 700mm, 25mm overlap with pilaster either side

- Size to suit site requirements and relevant building regulations

Components

- Indicator Face Plate
- Indicator Slide Bolt
- Coat Hook
- Self Closing Hinges

Pilaster Panel

- Material - Solid Grade Laminate
- Edge Treatment - Polished and radiused
- Thickness - 13mm

Standard Dimensions

- H 1850mm x W - varies to suit

site dimensions

Components

- Pedestal
- Indicator Slide Bolt
- Headrail

TECHNICAL DETAILS

Divisions

- Material - Solid Grade Laminate
- Edge Treatment - Polished and radiused
- Thickness - 13mm

Standard Dimensions

- H 2680mm x W 1500mm - varies to suit site dimensions.

Dimensions from back of cubicle to front

- Components - Fixing Cleat

Hardware

Indicator Plate

- Satin Anodised Aluminium
- Emergency release facility
- Circular face plate
- Concealed fixings
- Red/White occupancy indicator
- Face Fixed

Indicator Bolt

- Satin Anodised Aluminium
- Easy slide action lock
- Integrated buffer
- Face Fixed

Keep

- Satin Anodised Aluminium
- Face Fixed

Hinge

- Satin Anodised Aluminium
- Self closing cams
- Breakout-resistant fixing sleeve
- Anti-finger trap
- Lift-off facility for emergency access

access

Cleat

- Satin Anodised Aluminium
- D brackets
- Stainless Steel bolt-through

fixings

Pedestal

- Satin Anodised Aluminium
- Giving 25mm floor clearance
- Solid rolled design

Headrail

- Satin Anodised Aluminium
- High strength D profile

Call: 01692 774920 | Email: info@cube-install.com

Cube Install Limited

Belmore Place, 6 Bunkell Road, Rackheath Ind Estate, Norwich, NR13 6PX

www.cube-install.com

Registered in England No. 10501718

