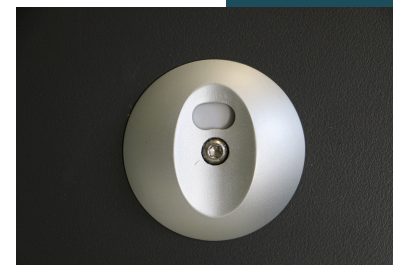
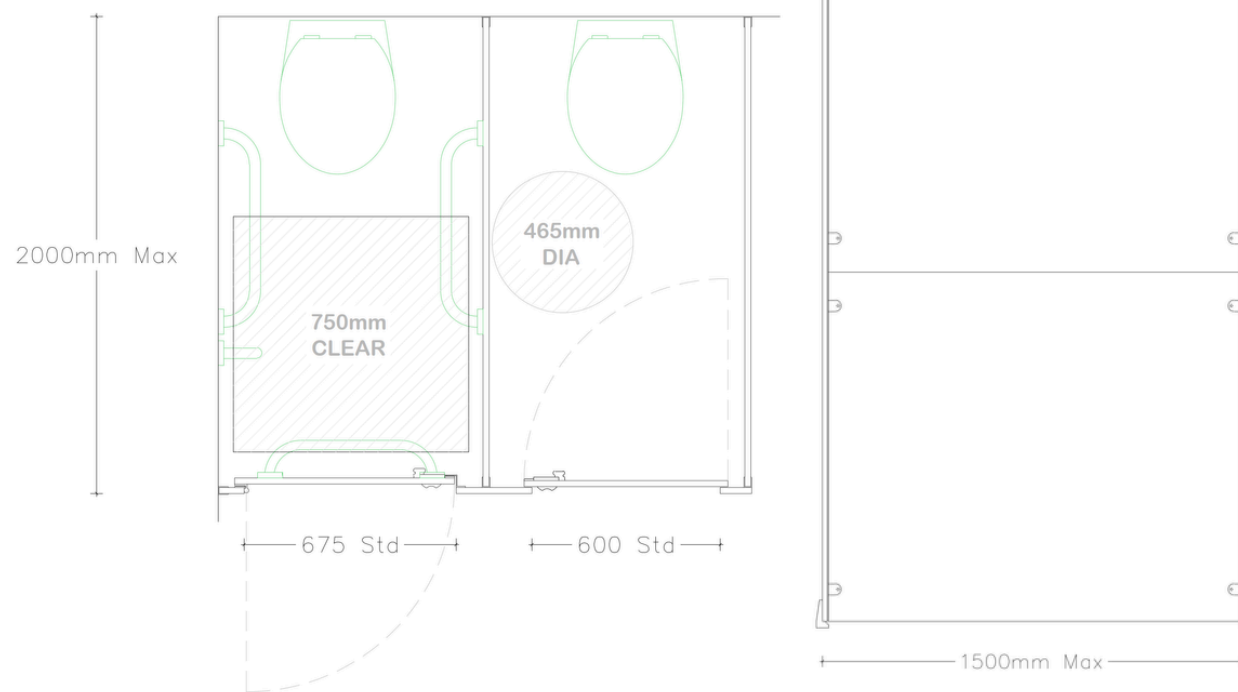
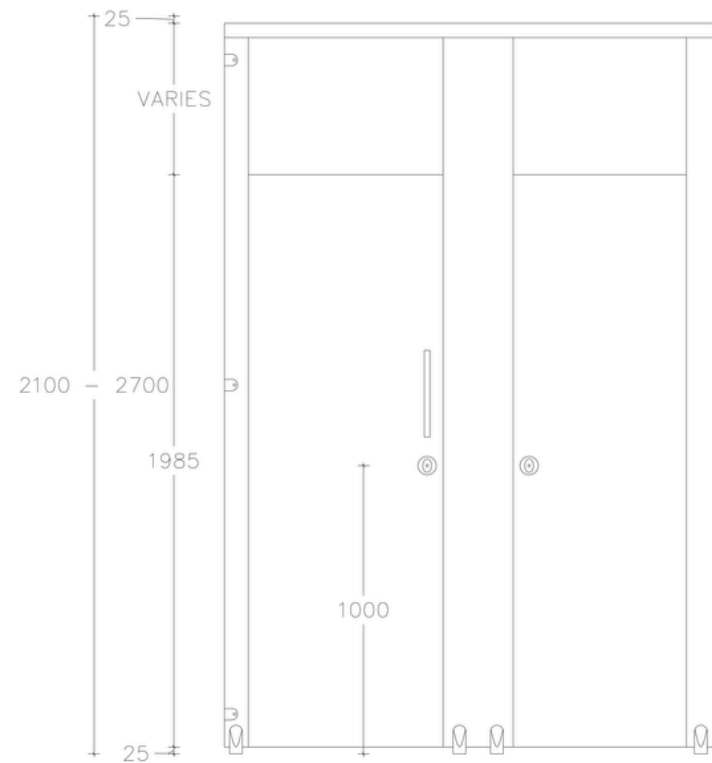


Rise HPL

Suitable for unisex washrooms with minimal floor clearance.



DIMENSIONS

- Max Overall Height
 - 2700mm
- Max Depth
 - 1500mm
- Floor Clearance
 - 25mm
- Ceiling Clearance
 - 25mm

TECHNICAL DETAILS

Door Panel

- Material
 - High Pressure Laminate
- Edge Treatment
 - 2mm thick bounded ABS lipping
- Thickness
 - 18mm
- Standard Dimensions
 - Inward Opening Full height door: H up to 2680mm x W 650mm, 25mm overlap with pilaster either side
 - Door with over panel: H 1975mm x W 650mm, 25mm overlap with Pilaster either side
 - Outward Opening Full height door: H up to 2680mm x W 700mm, 25mm overlap with pilaster either side
 - Door with over panel: H 1975mm x W 700mm, 25mm overlap with pilaster either side
 - Size to suit site requirements and relevant building regulations

Components

- Indicator Face Plate
- Indicator Slide Bolt
- Coat Hook
- Self Closing Hinges

Pilaster Panel

- Material
 - High Pressure Laminate
- Edge Treatment
 - 2mm thick bounded ABS lipping
- Thickness
 - 18mm
- Standard Dimensions
 - H 1850mm x W - varies to suit site dimensions
- Components
 - Pedestal
 - Indicator Slide Bolt Keep
 - Headrail
 - Fixing Cleat

TECHNICAL DETAILS

Divisions

- Material
 - High Pressure Laminate
- Edge Treatment
 - 2mm thick bounded ABS lipping
- Thickness
 - 18mm
- Standard Dimensions
 - H 2680mm x W 1500mm - varies to suit site dimensions. Dimensions from back of cubicle to front

Components

- Fixing Cleat

Hardware

- Indicator Plate
 - Satin Anodised Aluminium
 - Emergency release facility
 - Circular face plate
 - Concealed fixings
 - Red/White occupancy indicator
 - Face Fixed

Indicator Bolt

- Satin Anodised Aluminium
- Easy slide action lock
- Integrated buffer
- Face Fixed

Keep

- Satin Anodised Aluminium
- Face Fixed

Hinge

- Satin Anodised Aluminium
- Self closing cams
- Breakout-resistant fixing sleeve
- Anti-finger trap
- Lift-off facility for emergency access

Cleat

- Satin Anodised Aluminium
- D brackets
- Stainless Steel bolt-through fixings

Pedestal

- Satin Anodised Aluminium
- Giving 25mm floor clearance
- Solid rolled design

Headrail

- Satin Anodised Aluminium
- High strength D profile

Call: 01692 774920 | Email: info@cube-install.com

Cube Install Limited

Belmore Place, 6 Bunkell Road, Rackheath Ind Estate, Norwich, NR13 6PX

www.cube-install.com

Registered in England No. 10501718

