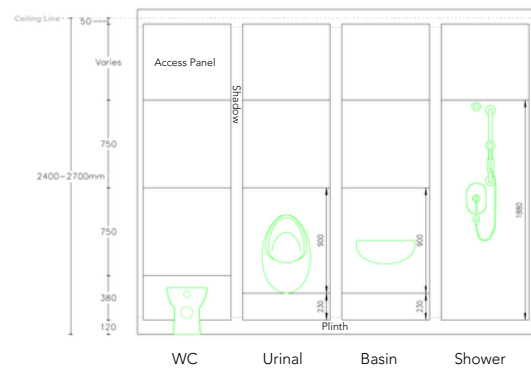


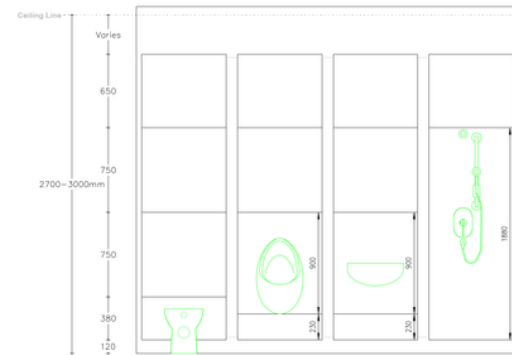
# MFC Duct

A budget-friendly option that doesn't compromise on hygiene or aesthetics.

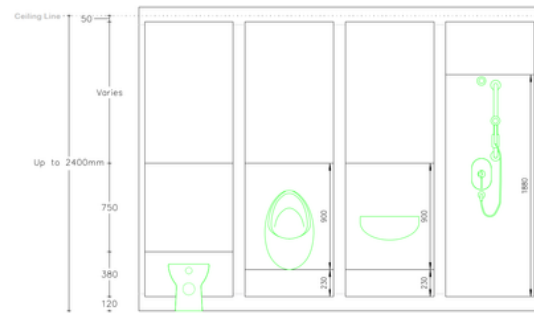
Ceiling height configuration 1



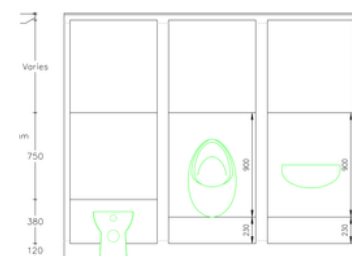
Ceiling height configuration 2



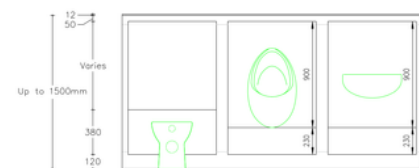
Ceiling height configuration 3



Low level configuration 1



Low level configuration 2



Plan View



## DIMENSIONS

Max Overall Height  
- 2700mm

## Technical Details

### Access Panel

Material  
- Melamine Faced Chipboard  
Edge Treatment  
- 2mm thick bonded ABS lipping  
Thickness  
- 18mm

### Horizontal Panel Joints

- Butt jointed, no gap

### Vertical Panel Joints

- Separated by shadow panel

### Vertical Panel Joints

- Fixing clips with pull-out facility  
- Fixing clips with lift-off facility  
- Hinges for fixed position, openable access panels  
- Turn locks for hinged panels  
- Security fixings for clip fixed panels

### Dimensions

- Width and Height to suit site dimensions and panel application

### Shadow Panel

Material  
- Melamine Faced Chipboard  
Edge Treatment  
- Straight Cut  
Thickness  
- 18mm  
Components  
- High strength fixing into framework

## TECHNICAL DETAILS

### Plinth

Material  
- Melamine Faced Chipboard  
Edge Treatment  
- Straight Cut  
Thickness  
- 18mm  
Components  
- High strength fixing into framework

### Framing

Material  
- Soft wood for bespoke fitting to surroundings  
Components  
- Receiving pull-out clips  
- Receiving lift-off clips  
- High strength fixing into patress or solid wall/floor

Call: 01692 774920 | Email: info@cube-install.com

Cube Install Limited

Belmore Place, 6 Bunkell Road, Rackheath Ind Estate, Norwich, NR13 6PX

www.cube-install.com

Registered in England No. 10501718

