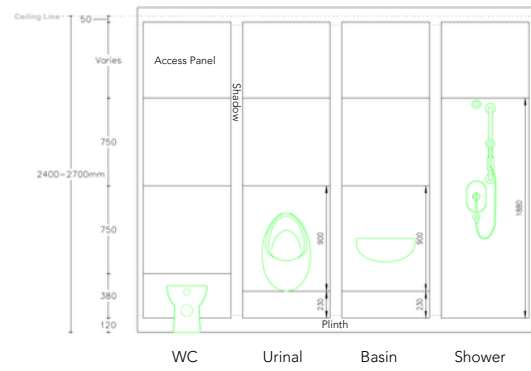


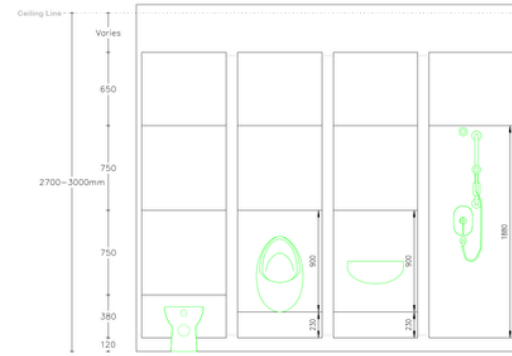
# SGL Duct

The perfect finishing touch for washrooms and wetrooms.

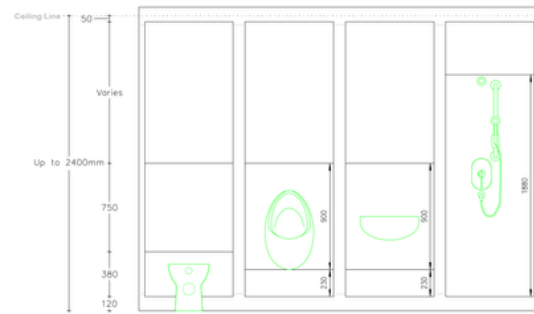
Ceiling height configuration 1



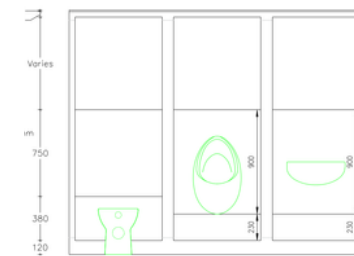
Ceiling height configuration 2



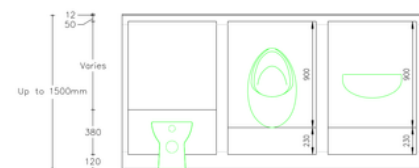
Ceiling height configuration 3



Low level configuration 1



Low level configuration 2



Plan View



## DIMENSIONS

- Max Overall Height
- 2700mm

## TECHNICAL DETAILS

### Access Panel

- Material
- Solid Grade Laminate
- Edge Treatment
- Polished and radiused
- Thickness
- 13mm
- Horizontal Panel Joints
- Butt jointed, no gap
- Vertical Panel Joints
- Separated by shadow panel
- Vertical Panel Joints
- Fixing clips with pull-out facility
- Fixing clips with lift-off facility
- Hinges for fixed position, openable access panels
- Turn locks for hinged panels
- Security fixings for clip fixed panels
- Dimensions
- Width and Height to suit site dimensions and panel application

### Shadow Panel

- Material
- Solid Grade Laminate
- Edge Treatment
- Straight Cut
- Thickness
- 13mm
- Components
- High strength fixing into framework

## TECHNICAL DETAILS

### Plinth

- Material
- Solid Grade Laminate
- Edge Treatment
- Straight Cut
- Thickness
- 13mm
- Components
- High strength fixing into framework

### Framing

- Material
- Soft wood for bespoke fitting to surroundings
- Components
- Receiving pull-out clips
- Receiving lift-off clips
- High strength fixing into framework

Call: 01692 774920 | Email: info@cube-install.com

Cube Install Limited

Belmore Place, 6 Bunkell Road, Rackheath Ind Estate, Norwich, NR13 6PX

www.cube-install.com

Registered in England No. 10501718

